

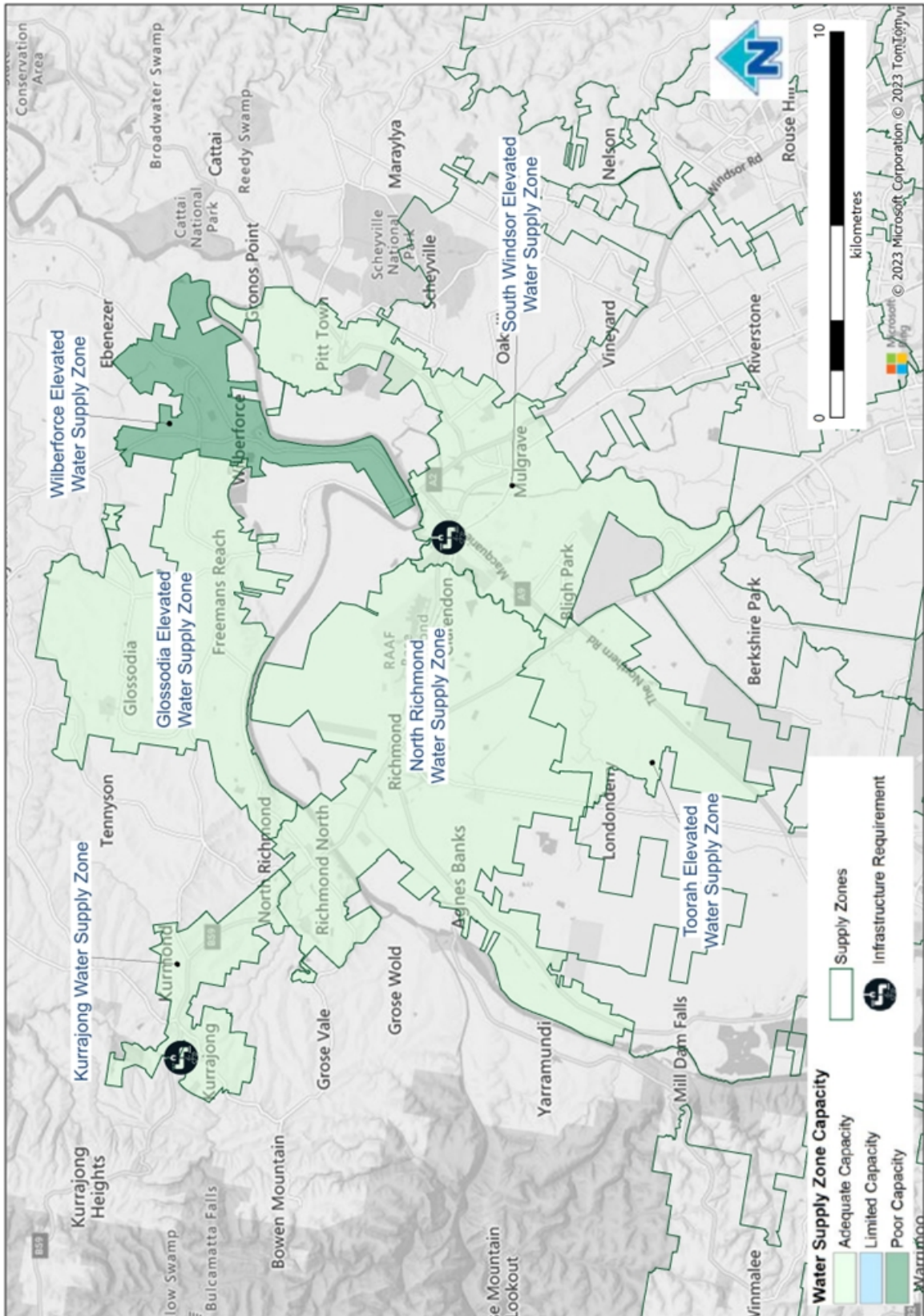
<b>Name of water delivery system</b>	North Richmond Water Delivery System
<b>Name of distribution system</b>	North Richmond Water Distribution System
<b>Name of water supply zone/s</b>	Glossodia Elevated Water Network Kurrajong Water Network North Richmond Water Network South Windsor Elevated and Toorah Water Network Wilberforce Elevated Water Network
<b>Map of Network</b>	<a href="https://www.sydneywater.com.au/SW/water-the-environment/how-we-manage-sydney-s-water/water-network/index.htm">https://www.sydneywater.com.au/SW/water-the-environment/how-we-manage-sydney-s-water/water-network/index.htm</a>

System Summary	Projected			
	2026	2031	2041	2051
<b>Demand MDD (ML/d)</b>				
Glossodia Elevated	5.8	6.2	6.3	6.3
Kurrajong	3.8	4.2	4.5	4.7
North Richmond	11.0	12.6	13.1	13.5
South Windsor Elevated and Toorah	19.5	19.9	20.4	21.1
Wilberforce Elevated	3.6	4.3	4.4	4.5

Infrastructure requirement and Capacity Constraints			
Planning Horizon	Infrastructure and Location	Purpose	Approximate Capital Cost (\$m)
2026	Water Network Pumping	Growth	\$24.1M
2026	Water Network Watermain	Growth	\$11.6M
2036	Water Network Watermain	Growth	\$16.8M
2046	Water Network Watermain	Growth	\$16M
2051	Water Network Watermain	Growth	\$8.4M

Information sources, where publicly available
N/A (not publicly available)

Further investigations
Refer to Growth Servicing Plan 2022-2027: <a href="https://www.sydneywater.com.au/plumbing-building-developing/developing/growth-servicing-plan.html">https://www.sydneywater.com.au/plumbing-building-developing/developing/growth-servicing-plan.html</a>



© June 2023 Sydney Water  
While Sydney Water has made every effort to provide information that is up to date, this information can be affected by many factors and is provided as a guide only. Sydney Water makes no representation, warranty, undertaking or guarantee (express or implied) that the information provided in this document is accurate, reliable or complete.