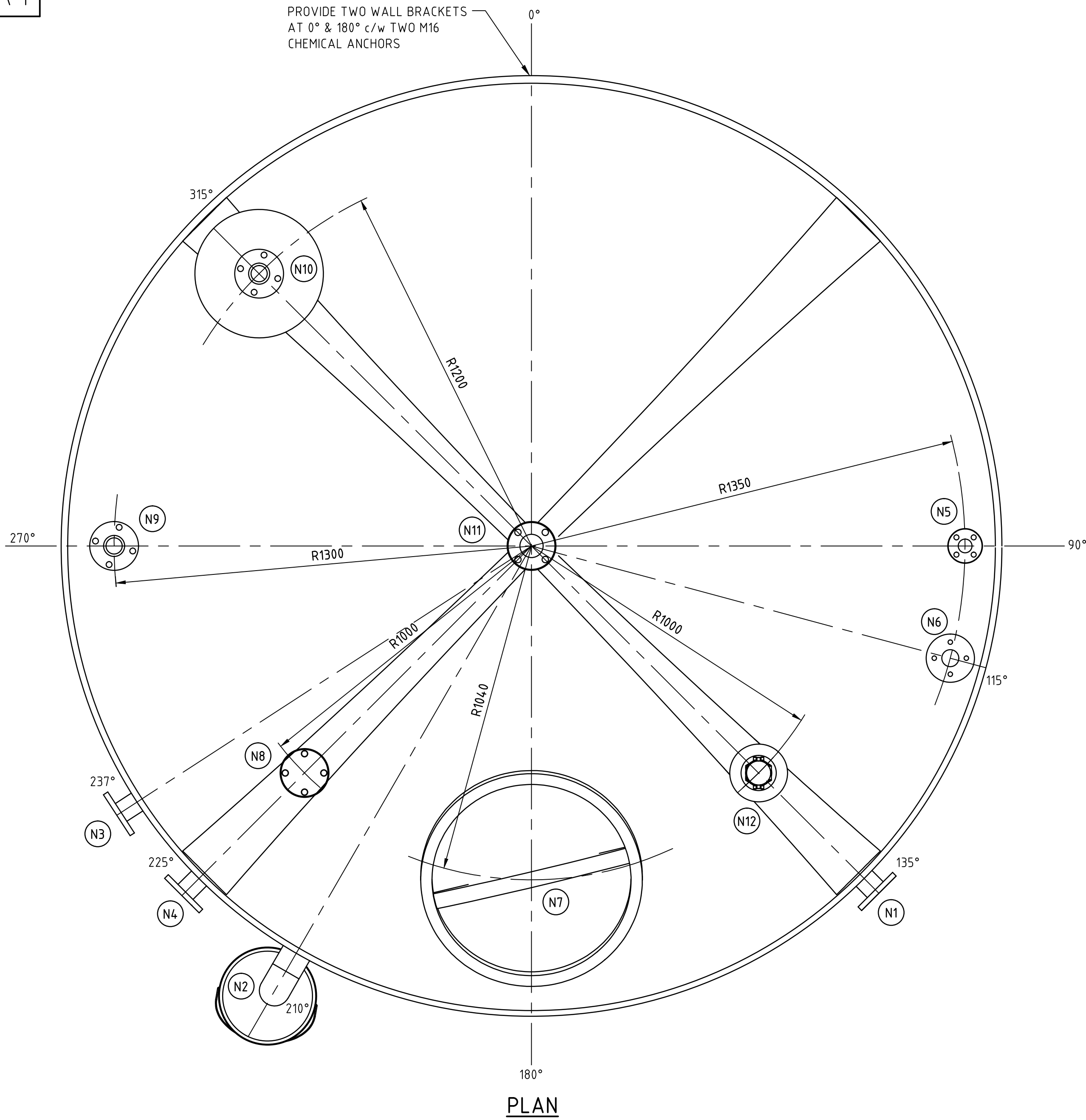


A1



NOZZLE	SIZE	SCHEDULE	CONNECTION	RATING	TYPE	DESCRIPTION	REMARKS
N1	DN50	80	FLANGED	ANSI 150	FF	OUTLET	
N2	DN80	80	PIPE	-	-	OVERFLOW	
N3	DN50	80	FLANGED	ANSI 150	FF	DRAIN	
N4	DN50	80	FLANGED	ANSI 150	FF	OUTLET (MIXING/CIRC. LINE)	
N5	DN25	80	FLANGED	ANSI 150	FF	CONDENSATE RELIEF	
N6	DN40	80	FLANGED	ANSI 150	FF	INLET (CARRIER WATER)	
N7	ø600	-	LID	CLASS A	-	MANHOLE	15kg MAX. WEIGHT
N8	DN50	80	FLANGED	ANSI 150	FF	SPARE	COMPLETE WITH BLIND FLANGE
N9	DN50	80	FLANGED	ANSI 150	FF	INLET (FROM TRANSFER PUMP)	
N10	DN50	80	FLANGED	ANSI 150	FF	INLET (NEAT CHEMICAL)	
N11	DN50	80	FLANGED	ANSI 150	FF	VENT	REFER DETAIL - A
N12	ø180	80	RISER	-	-	LEVEL TRANSMITTER	REFER DETAIL - B

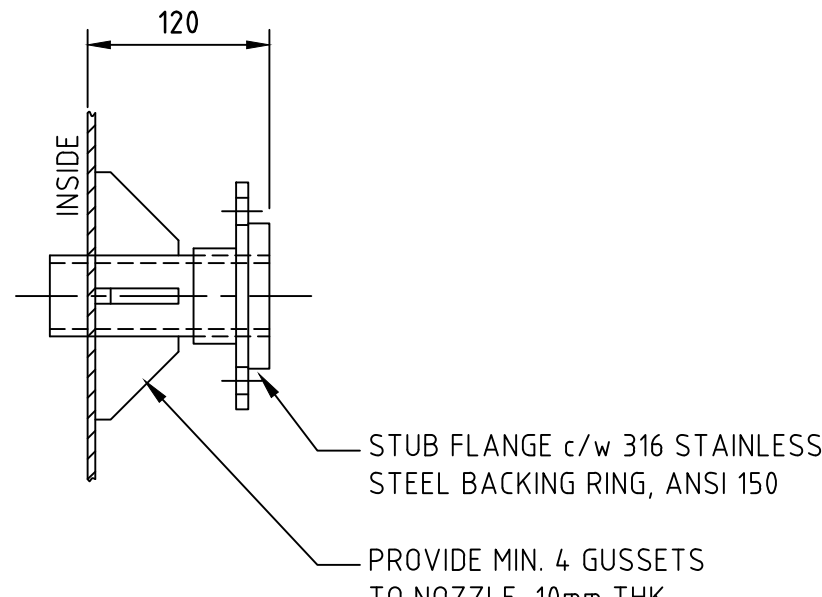
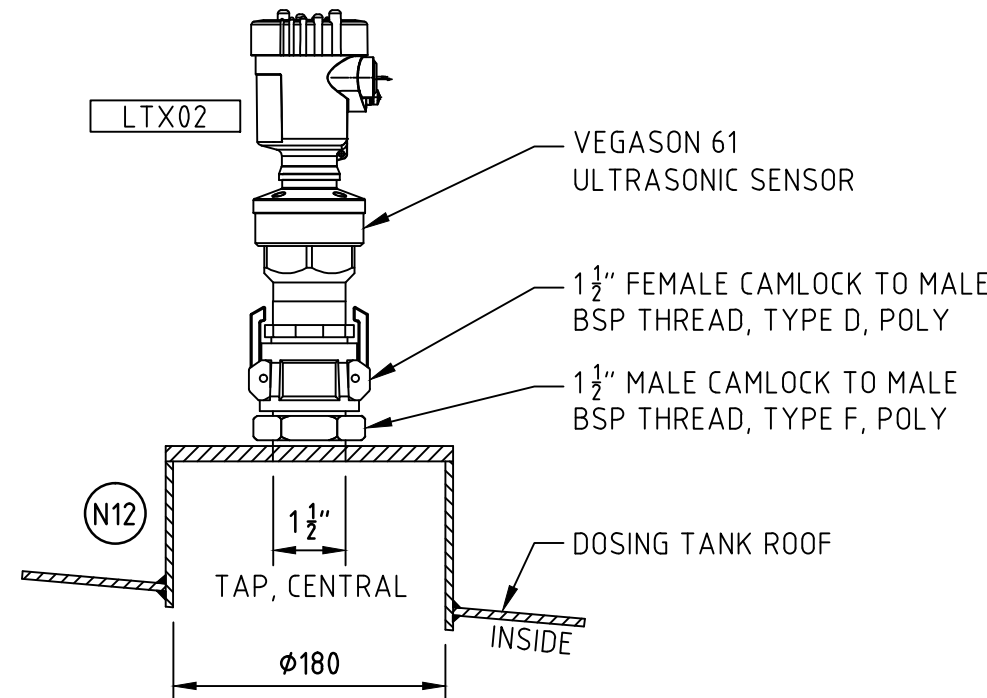
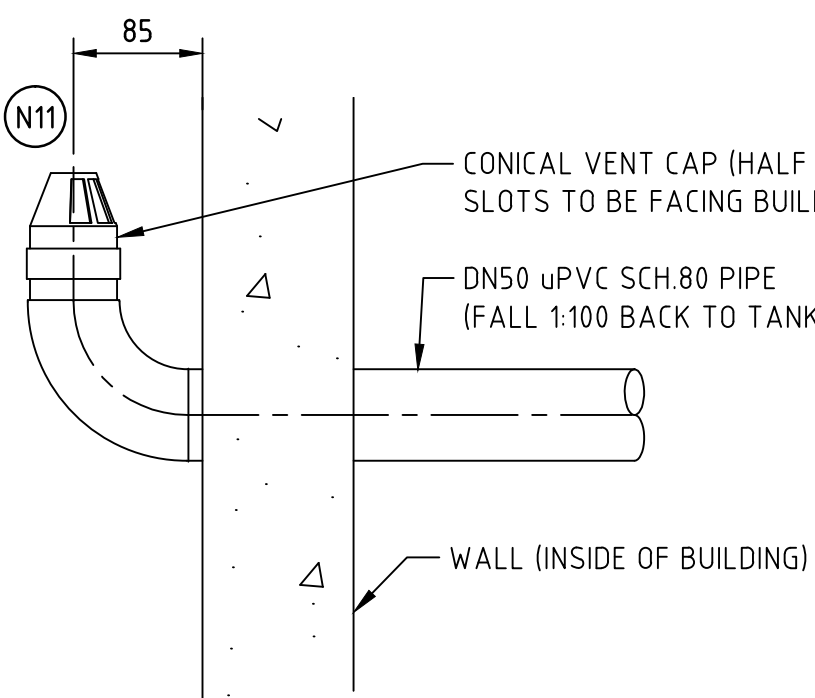
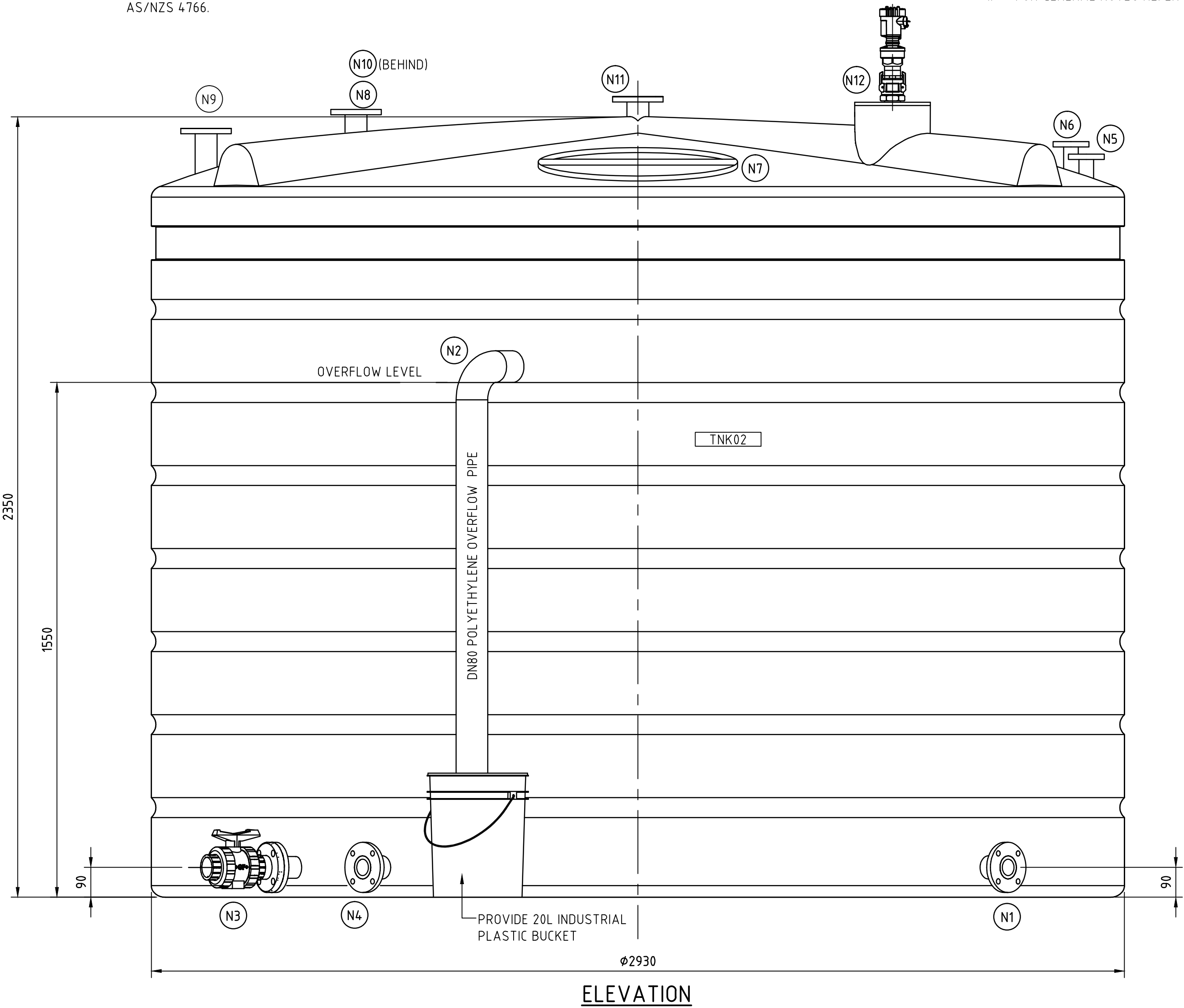
DOSING TANK NOTES:

- DURAPLAS POLYETHYLENE STORAGE TANK (OR APPROVED EQUIV.)
- NOMINAL CAPACITY: 13,500L
- TANK TO BE DESIGNED & MANUFACTURED FROM ROTOMOULDED TRANSLUCENT POLYETHYLENE AND SUITABLE FOR SODIUM HYPOCHLORITE.
- TO BE DESIGNED AND CONSTRUCTED IN ACCORDANCE WITH AS/NZS 4766.
- ALL NOZZLES TO BE BACK TO BACK WELDED AND SUPPLIED WITH GUSSETS, REFER DETAIL - C.
- SUPPLIER TO PROVIDE CERTIFICATION OF COMPLIANCE OF DOSING TANK TO AS/NZS 4766.

THIS DRAWING MAY ONLY BE USED IN THE COURSE OF AND FOR THE PURPOSE OF CREATING SYDNEY WATER ASSETS. USE THIS DRAWING WITH CARE. YOU ARE RESPONSIBLE TO APPLY THE WORK SHOWN IN THIS DRAWING CORRECTLY IN THE CIRCUMSTANCES OF YOUR PROJECT. YOU MUST ENSURE THE WORK IS FIT FOR PURPOSE AND WILL PERFORM ITS INTENDED FUNCTION AS REQUIRED.

NOTES:

- FOR GENERAL NOTES REFER TO DRG No. DTC-7002.



Sydney
WATER

©COPYRIGHT
STATE OF NEW SOUTH WALES THROUGH SYDNEY
WATER CORPORATION. ALL RIGHTS RESERVED

APPROVED

MAR 2017

KEN WIGGINS
MANAGER, E & ES

ENGINEERING & ENVIRONMENTAL SERVICES

A

ORIGINAL ISSUE

DETAILS OF AMENDMENT

KW

17/03/17

APP'D

DATE

DEEMED TO COMPLY DRAWINGS

7kL + 13.5kL RECHLORINATION PLANT
SODIUM HYPOCHLORITE
13.5kL DOSING TANK DETAILS

DTC

7167